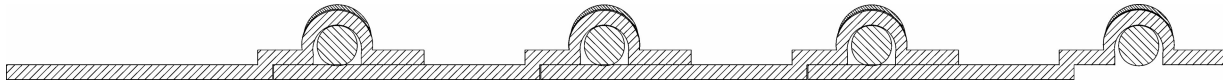




**ENGINEERING AND TECHNICAL DATA**  
**Flexadux® TR T-7W**  
**March 2007**

**Construction:** Medium weight thermoplastic rubber hose reinforced with a spring steel wire helix & external polypropylene wearstrip



**Product Features:**

- ~ Most general all-purpose hose
- ~ Wearstrip offers additional external abrasion & drag resistance
- ~ Designed for applications with wide temperature ranges
- ~ Great moisture & UV resistance
- ~ Excellent chemical resistance
- ~ Smooth interior assures minimal friction loss & efficient air flow
- ~ Wall Thickness = .025" (2"), .030+(2.5" & above)
- ~ Available in metric sizes, consult sales team on pricing & minimums

**Applications:** Recommended for dust control and light bulk material handling applications.

**Temperature Range:** -40°F to 275°F

**Diameter Range (Inches I.D.):** 2.00-24.00 Inch I.D.

**Standard Length:** 25 & 50 Feet

**I.D. Tolerances (Inches):** To 8 Inch: -0.00 to +0.125 Inch  
8 Inch and over: -0.00 to +0.250 Inch

**Standard Color:** Black with yellow wearstrip

**End Finish:** Plain Cut

**Markets:** ~Abrasion Resistance ~Agricultural ~Air Duct Cleaning ~Car Wash ~Cotton Pickers ~Dry Cleaning ~Duct Cleaning ~Dust Collection ~Furnace Duct Cleaning ~Industrial ~Landfill Venting ~Lawn & Leaf Collection ~Off-Road ~Ozone ~Paint Spray Extraction ~Paper Trim Conduit ~Pipe Organs ~Plastic Bag Machines ~R.V. Manufacturing ~Sheet Metal ~Woodworking/Furniture Industries



A **SCHAUENBURG** HOSE TECHNOLOGY COMPANY

1510 Armstrong Road, P.O. Box 4275  
Warsaw, IN 46581-4275

Telephone 574-267-7909 • Toll Free 800-343-0428 • Fax 574-269-7491 • Toll Free Fax 800-382-8464  
sales@flexaust.com • www.flexaust.com



**ENGINEERING AND TECHNICAL DATA**  
**Flexadux® TR T-7W**  
**(Page 2)**  
**March 2007**

SIZE INSIDE DIMENSION (INCHES)	APPROXIMATE WEIGHT (LBS./FT.)	MINIMUM CENTERLINE BEND RADIUS (INCHES)	COMPRESSION RATIO	MAXIMUM RECOMMENDED NEGATIVE PRESSURE (IN./HG.)	MAXIMUM RECOMMENDED POSITIVE PRESSURE (PSI)
2	.25	2.42	2:1	29	14
3	.4	3	2:1	29	9.5
4	.67	5.5	2:1	29	9
5	.85	5.5	2:1	17	8
6	.82	5.5	3:1	8.3	5
8	1.2	8.25	3:1	3.46	4
10	2.2	10	3:1	9.2	4
12	2.7	12	3:1	5.36	3.5
14	3	9.5	3:1	3	3.4
16	3.5	11	3:1	2.3	2.6
18	3.9	12	3:1	1.6	2.3
20	4.3	13.5	3:1	1.2	2.1
22	4.4	15	3:1	.9	1.9
24	4.8	16	3:1	.7	1.75

Note: Technical data based on 2 ft. straight lengths of hose @ 72° F.

Disclaimer: The proper use and maintenance of hose and/or duct manufactured by Flexaust is the sole responsibility of the purchaser and ultimate user of the product. This information is presented as a general guide only. The number of variables which can be present in any application make firm recommendations impossible. Adequate testing under actual service conditions is necessary to properly establish suitability. We take pride in the quality of all Flexaust products and we welcome comments and suggestions from our customers.



**A SCHAUBURG HOSE TECHNOLOGY COMPANY**

1510 Armstrong Road, P.O. Box 4275  
Warsaw, IN 46581-4275

Telephone 574-267-7909 • Toll Free 800-343-0428 • Fax 574-269-7491 • Toll Free Fax 800-382-8464  
sales@flexaust.com • www.flexaust.com